

Renee Eriksen

- Research Plant Physiologist
- USDA-ARS Salinas
- 831-269-9831
- Renee.Eriksen@usda.gov

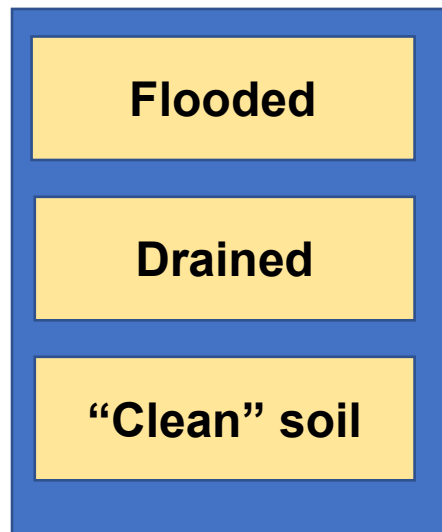
- M.S. Biology. University of Massachusetts Boston
- Ph.D. Plant Biology. University of New Hampshire
- Postdoctoral work
 - Crop Improvement and Protection Research Unit, Salinas. Abiotic stress lettuce.
 - Forage Seed and Cereal Research Unit, Corvallis, Oregon. Hop breeding.

- USDA projects
 - Celery breeding for Fusarium resistance
 - Field trials
 - Greenhouse inoculations
 - Tipburn
 - Molecular mechanisms of tipburn
 - Develop molecular markers for tipburn resistance
 - Greenhouse assays for tipburn
 - Improve nutritional quality of lettuce
 - Bioavailability of polyphenol (antioxidant) content with USDA-ARS Western Nutrition Research Center
 - USDA-ARS Albany, CA to use leftover outer leaves after lettuce harvest
 - Microbiome of the leaf and soil
- Others
 - Molecular mechanisms of INSV + soilborne pathogens

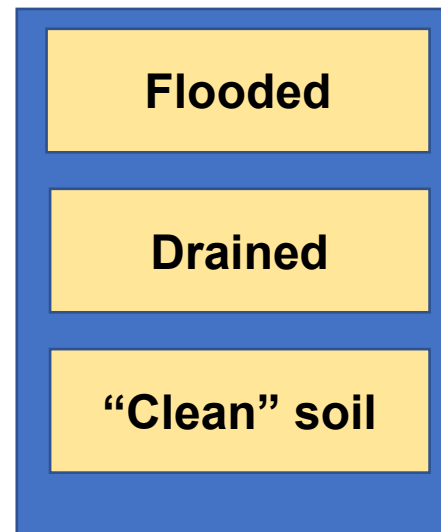
- Started in summer 2021
 - Hired a permanent technician
 - Hired student help
 - Purchased equipment
 - Moving to new building in April
- Tipburn assays in the greenhouse and growth chamber
 - On-going
 - Initial greenhouse experiments partly successful with susceptible cultivars
 - Follow-up has been unsuccessful
- Developing inoculation protocols
 - Fusarium
 - INSV with Richardson lab
 - Pythium-infected soil

Inoculations with Pythium infected soil

- Pythium greenhouse infections



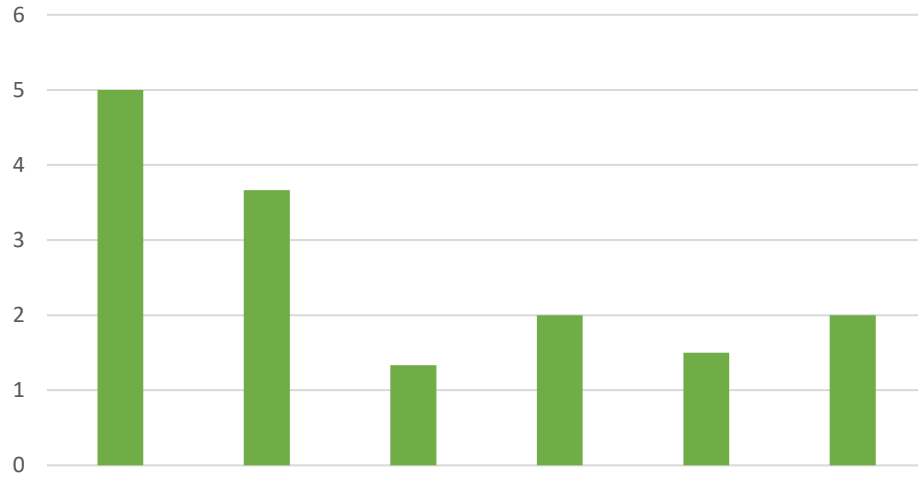
• **Heated Soil**



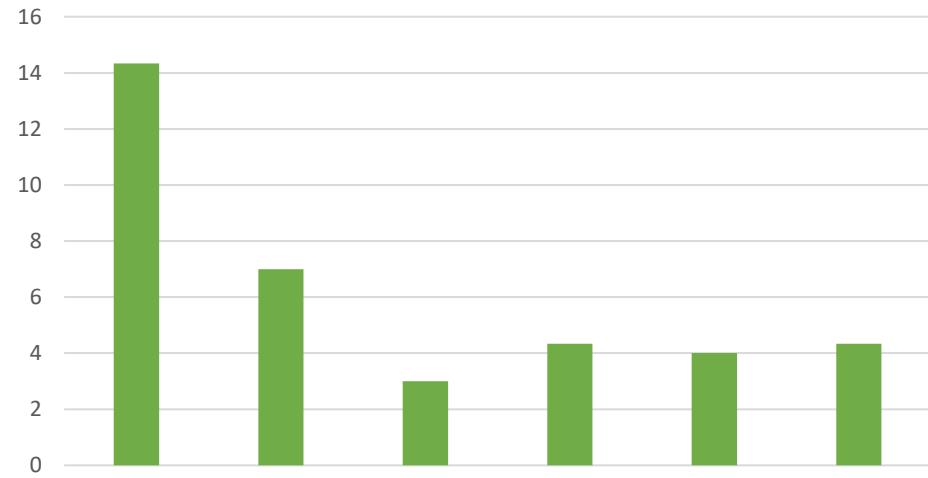
• **Not-heated Soil**



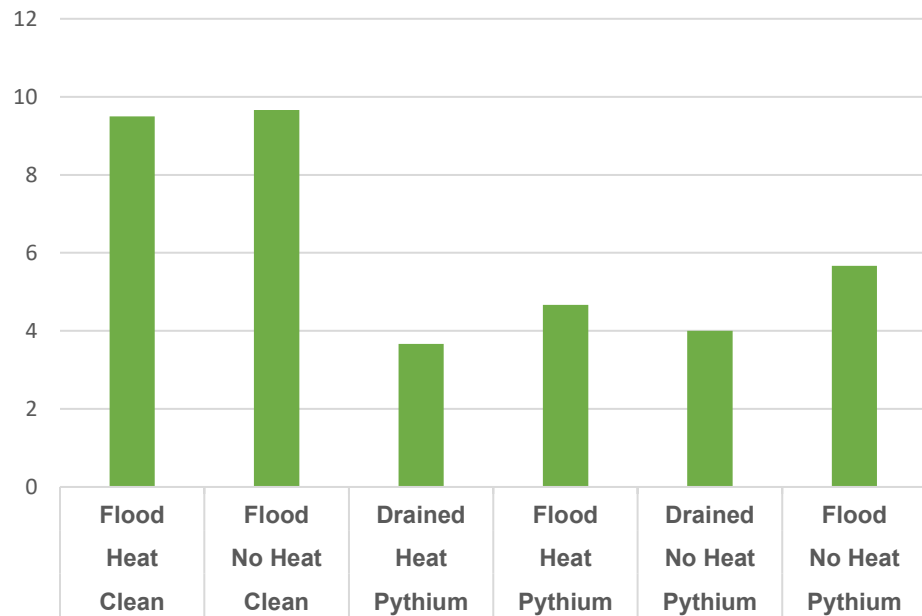
'Cavalry'



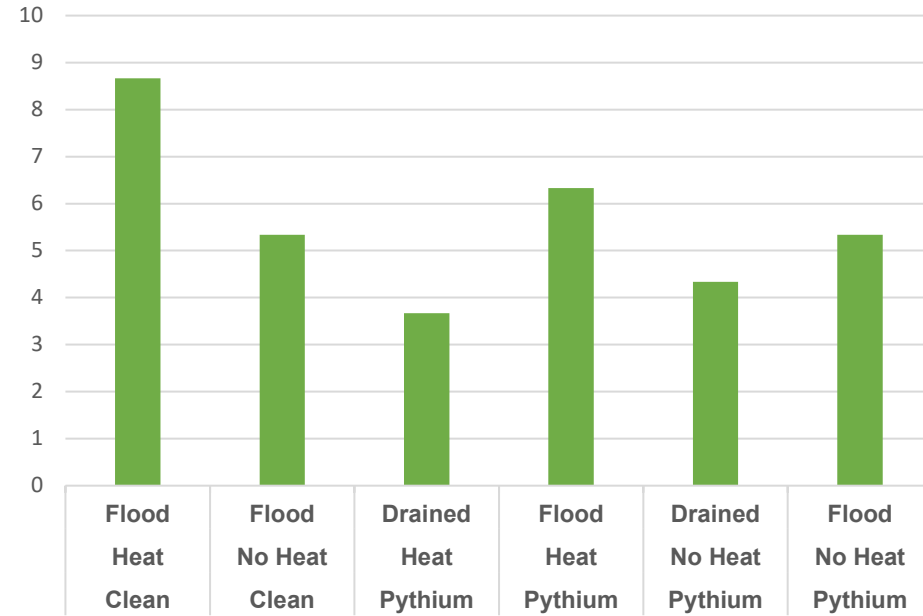
'Eruption'

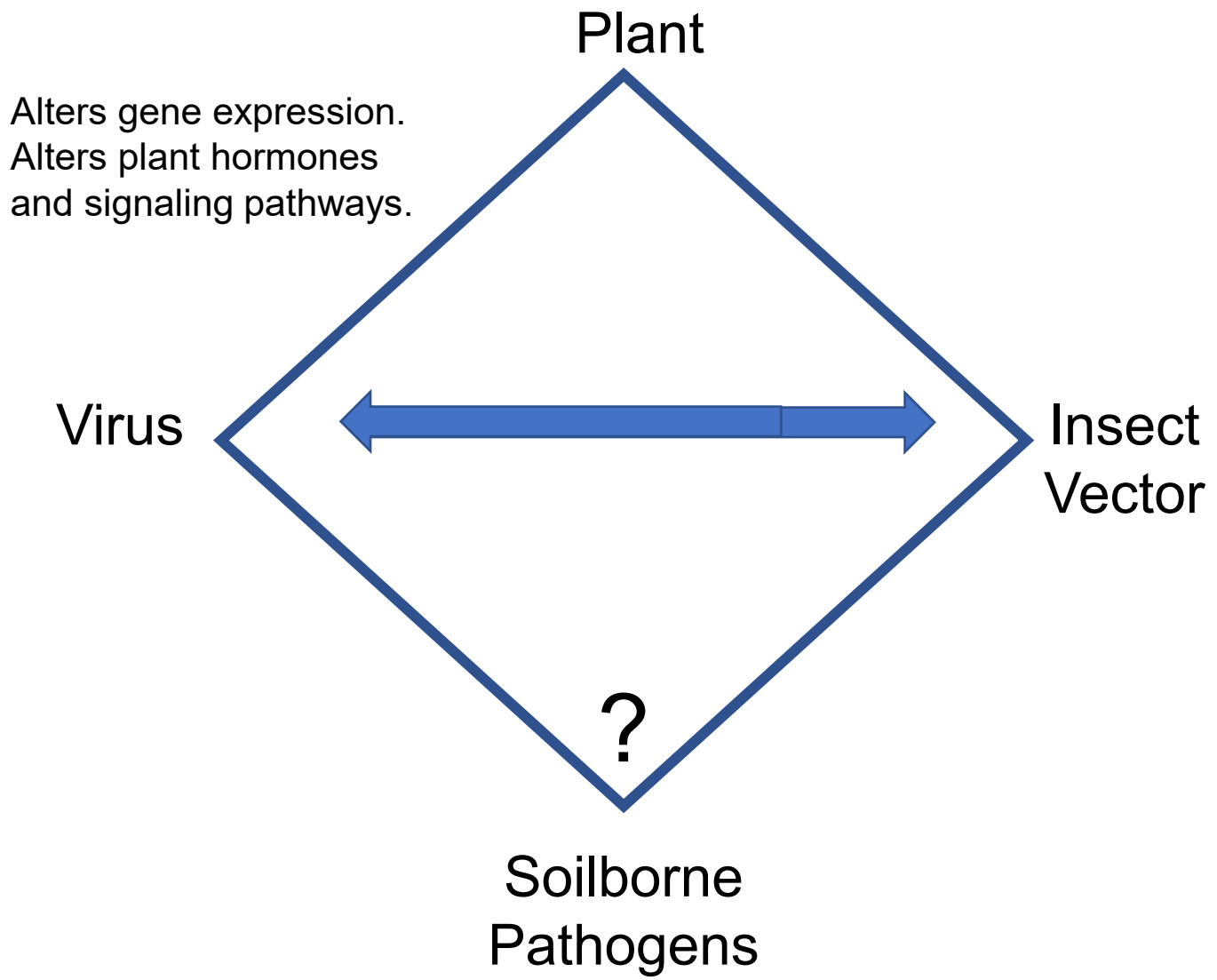


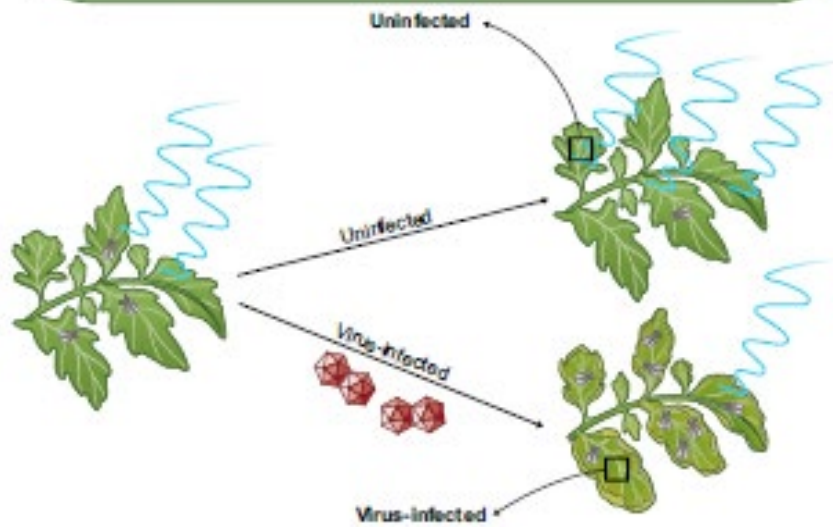
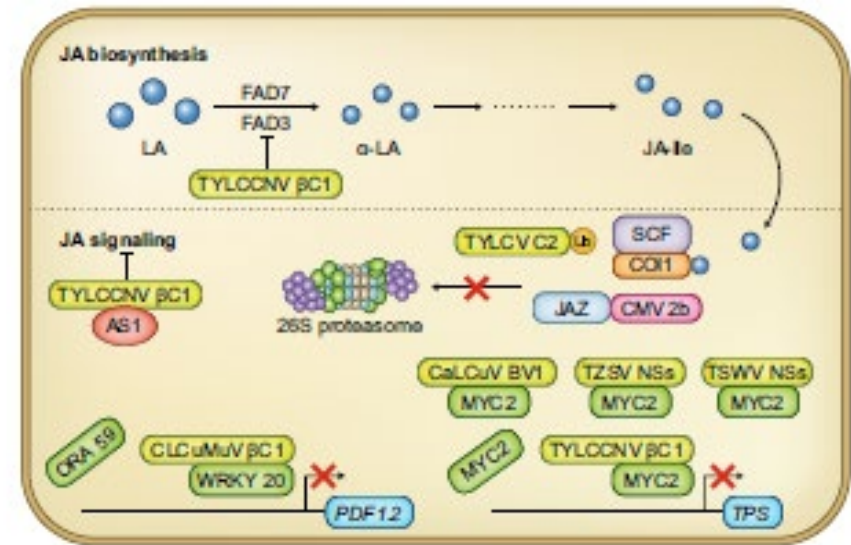
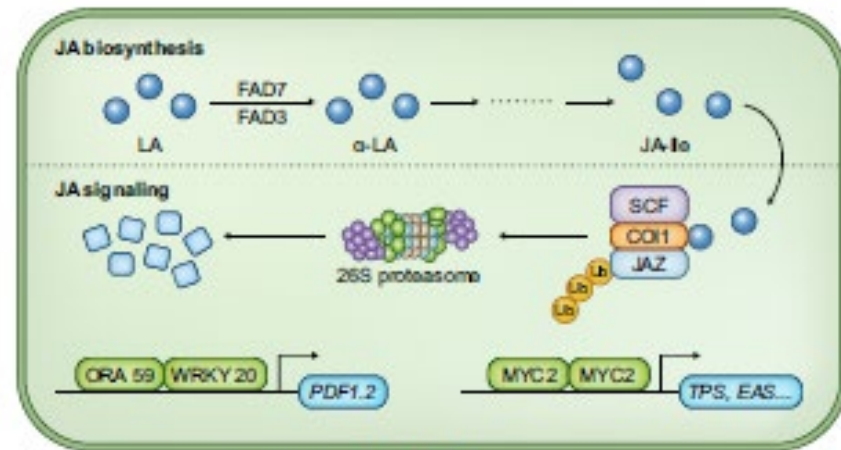
'Green Towers'



'White Paris'







Tomato leaf curl yellow virus, cucumber mosaic virus, and cotton leaf curl Multan virus.
 Pan et al. 2021. Virus-induced phytohormone dynamics and their effects on plant-insect interactions. *New Phytologist* 230:1305-1320

Renee Eriksen
Research Plant Physiologist
USDA-ARS
1636 East Alisal St
Salinas, CA 93905

Renee.Eriksen@usda.gov
831-269-9831